



Colour Collection 2

*Wake up to
Comfort & Style*



UK RESIN FLOORS

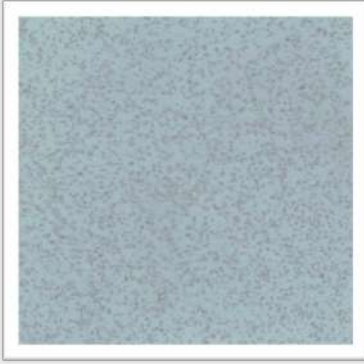
Taking Quality to Another Level

Dusty Collection

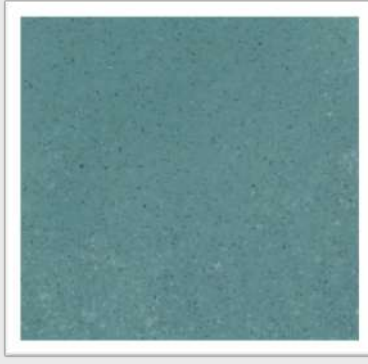
A blend of two colours with recycled filler



Blue Steel



Mist



Atoll Blue



Cote D'Azure



Chalk



Alabaster



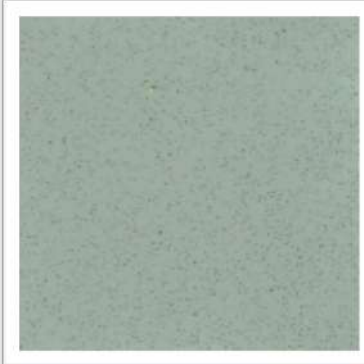
Caramel Latte



Elegant Grey



Vert de Gris



Lichen



Wild Thyme



Winter Moss



Platinum Grey



Carbon Steel



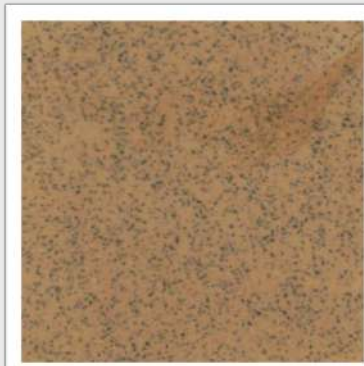
Mercury



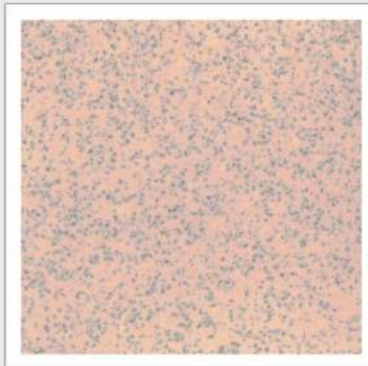
Zinc



Putty



Burnt Gold



Nude Plaster



Tuscan Villa



Belgian Sky



Clay



Slate



Graphite

Solid Collection



Blue Steel



Mist



Atoll Blue



Cote D'Azur



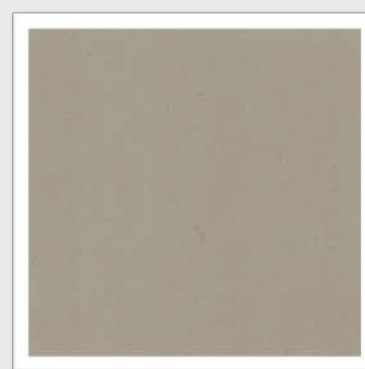
Chalk



Albaster



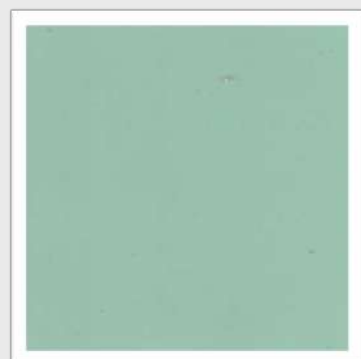
Caramel Latte



Flint



Vert de Gris



Lichen



Wild Thyme



Winter moss



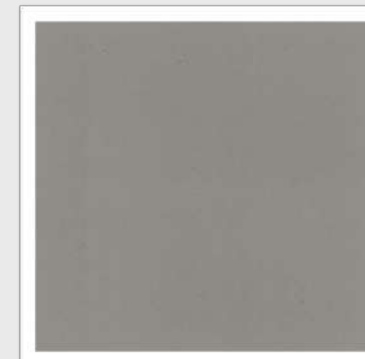
Platinum Grey



Carbon Steel



Mercury



Zinc



Putty



Burnt Gold



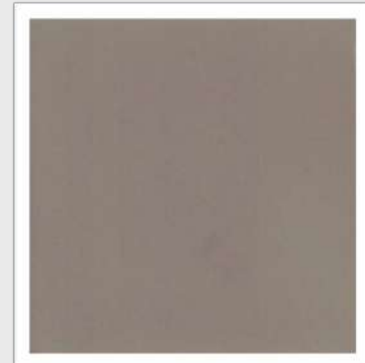
Nude Plaster



Tuscan Villa



Belgian Sky



Clay



Slate



Graphite

Motion Collection

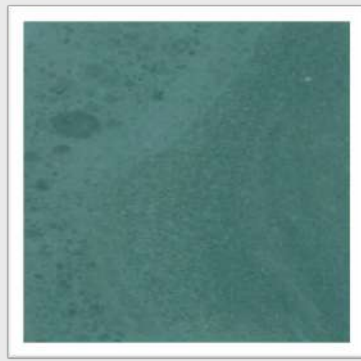
A blend of two colours



Blue Steel



Mist



Atoll Blue



Cote D'Azur



Chalk



Albaster



Caramel Latte



Flint



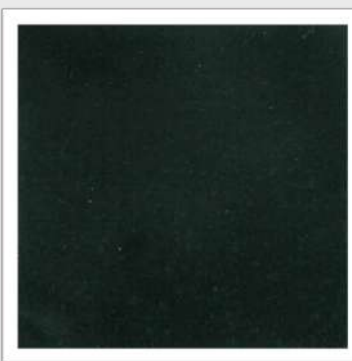
Vert de Gris



Lichen



Wild Thyme



Winter moss



Platinum Grey



Carbon Steel



Mercury



Zinc



Putty



Burnt Gold



Nude Plaster



Tuscan Villa



Belgian Sky



Clay



Slate

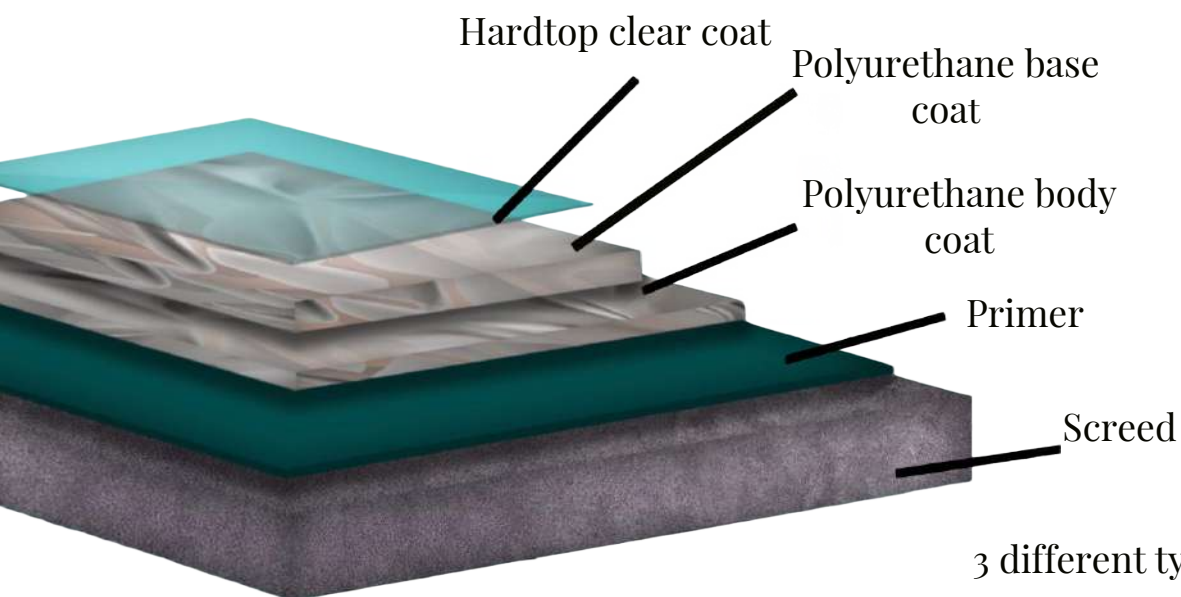


Graphite

PLUS PU



3-4 days installation



3 different types for both systems

Solid: Single colour.

Motion: Blend of two colours.

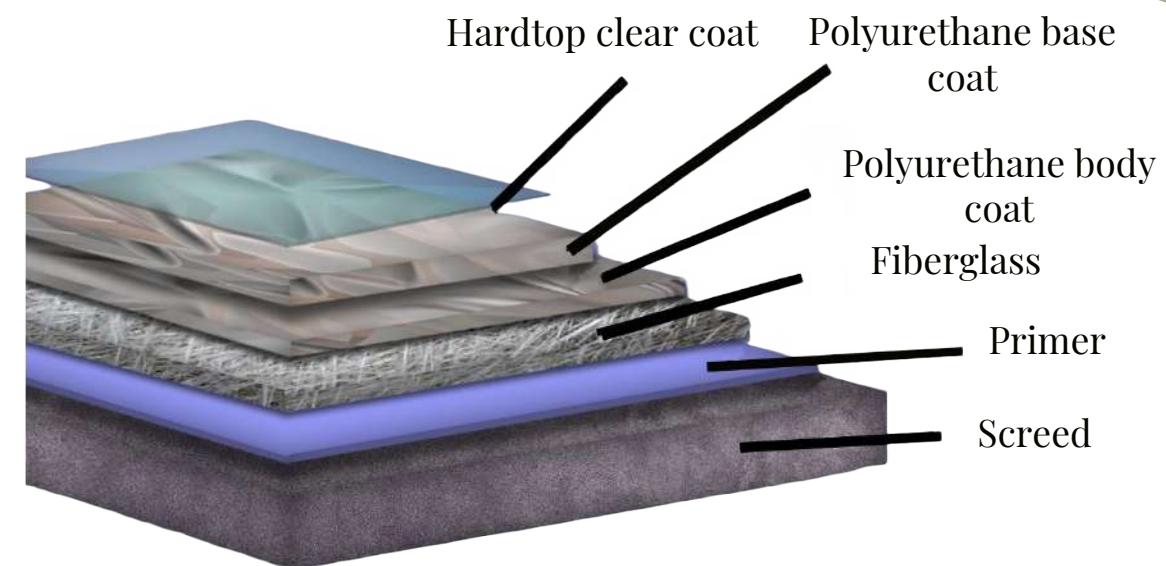
Dusty: Blend of 2 colours with recycled filler

- Remains elastic
- Easy to clean and maintain.
- Seamless
- Sound reduction
- Can be applied on top of existing (tiled) floor.
- Deep Matt finish
- Aliphatic polyurethane material
- Fluid-tight
- Good wear resistant
- Compatible with all types of UFH
- Completely free from solvents
- Active Ultraviolet blocker

DELUXE PU



4-5 days installation



- Remains elastic
- Easy to clean and maintain.
- Seamless
- Sound reduction
- Can be applied on top of existing (tiled) floor.
- Deep Matt finish
- Aliphatic polyurethane material
- Fluid-tight
- Good wear resistant
- Compatible with all types of UFH
- Completely free from solvents
- Active Ultraviolet blocker
- Extra Resistance to cracks
- 225 grams of Fiberglass per sqrm



UK RESIN FLOORS

*22 The Broadway, Mutton Lane,
Potters Bar, Hertfordshire, EN6*

*2HT (Showroom) Visitors by
Appointment only*

info@ukresinfloors.com

020 3488 6494