

Colour Collection 1

*Wake up to
Comfort & Style*



UK RESIN FLOORS

Taking Quality to Another Level

Concrete Look – A blend of two colours



Blue Steel



Vapor



Coral Lagoon



Azure Coast



Silver Slate



Charcoal Metal



Liquid Silver



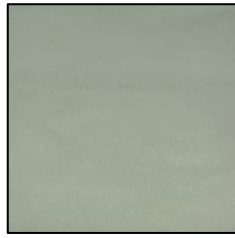
Metallic Ash



Green Patina



Mossy Green



Untamed Herb



Frosty Fern



Skyline Blue



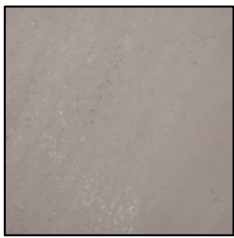
Earthenware



Charcoal Stone



Dark Pencil



Neutral Beige



Amber Blaze



Bare Plaster



Italian Residence



Morning Dew



Serene Zephyr



Vital Energy



Crafted Alloy



Crisp White



Smooth Marble



Rich Coffee



Stone Grey



Unwavering



Frigid Hollow



Veined Flint



Impending Grit

Stone

Solid Colours



Blue Steel



Vapor



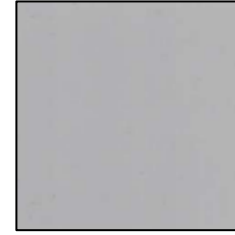
Coral Lagoon



Azure Coast



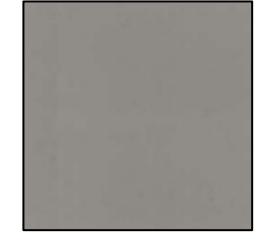
Silver Slate



Charcoal Metal



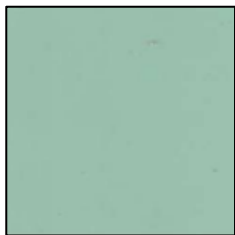
Liquid Silver



Metallic Ash



Green Patina



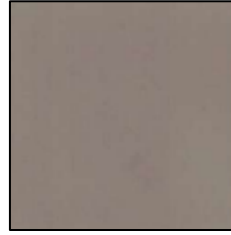
Mossy Green



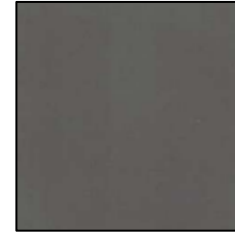
Untamed Herb



Frosty Fern



Earthenware



Charcoal Stone



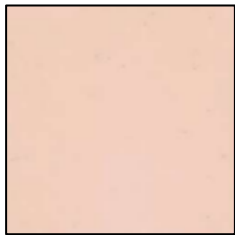
Dark Pencil



Neutral Beige



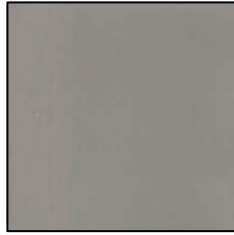
Amber Blaze



Bare Plaster



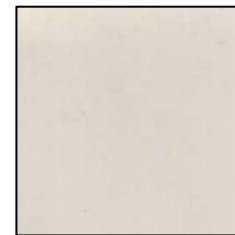
Italian Residence



Crafted Alloy



Crisp White



Smooth Marble

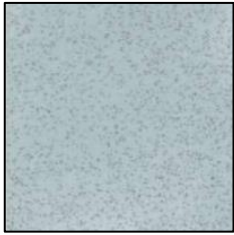


Rich Coffee

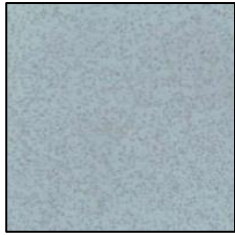


Stone Grey

Breccia - A blend of two colours with recycled filler



Blue Steel



Vapor



Coral Lagoon



Azure Coast



Silver Slate



Charcoal Metal



Liquid Silver



Metallic Ash



Green Patina



Mossy Green



Untamed Herb



Frosty Fern



Earthenware



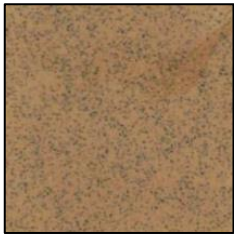
Charcoal Stone



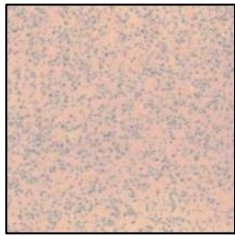
Dark Pencil



Neutral Beige



Amber Blaze



Bare Plaster



Italian Residence



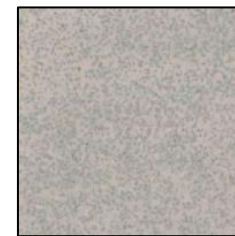
Crafted Alloy



Crisp White



Smooth Marble



Rich Coffee

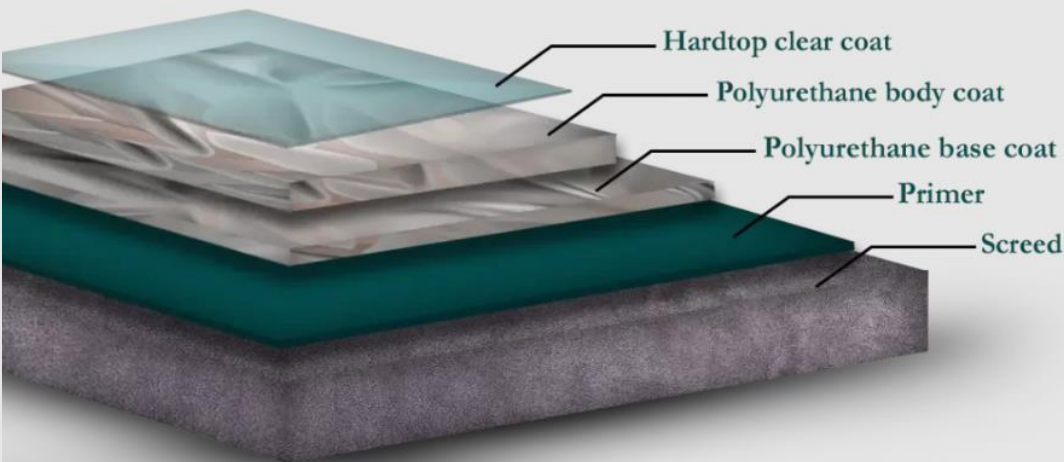


Stone Grey

- Remains elastic
- Easy to clean and maintain
- Seamless
- Sound reduction
- Can be applied on top of existing (tiled) floor
- Deep Matt finish
- Aliphatic polyurethane material
- Fluid-tight
- Good wear resistant
- Compatible with all types of UFH
- Completely free from solvents
- Active Ultraviolet blocker



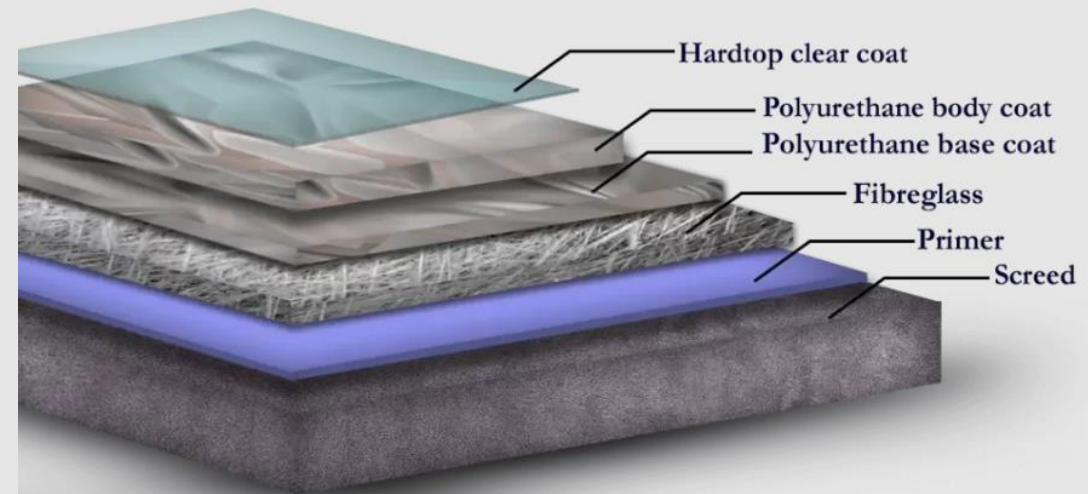
Polypure Plus



- Remains elastic
- Easy to clean and maintain
- Seamless
- Sound reduction
- Can be applied on top of existing (tiled) floor
- Deep matte finish
- Aliphatic polyurethane material
- Fluid-tight
- Good wear resistant
- Compatible with all types of UFH
- Completely free from solvents
- Active ultraviolet blocker
- Extra resistance to cracks
- 225g of fiberglass per sqm



Polypure Luxe





UK RESIN FLOORS

UK RESIN FLOORS (Showroom)

22 The Broadway,

Mutton Lane,

Potters Bar,

Hertfordshire,

EN6 2HT

020 3488 6494

Info@ukresinfloors.com